

Accessories: Back-mount Frames and PROFIL Mounting

Back-mount Frame 2/10 and 2/8 Pitch 22.5 mm and 25.0 mm

LSA-PLUS back-mount frames consist of U-shaped stainless-steel sheet. This means a high degree of stability and full corrosion resistance. Depending on requirement, back-mount frames can be used to accommodate various numbers of modules as mentioned in the tables below.

When selecting the frame depth, we recommend:

- Back-mount frame up to 70 pairs -> 12 mm depth
- Back-mount frame up to 100 pairs -> 22 mm depth
- Back-mount frame up to 200 pairs -> 30 mm depth
- Back-mount frame 200 pairs and more -> 50 mm depth

This recommendation is based on a conductor diameter 0.5 mm, including insulation 1.5 mm. Deeper frames must be selected for wires measuring 0.6 mm - 0.9 mm, or the cable has to be fed through the back-mount frame bundle by bundle.

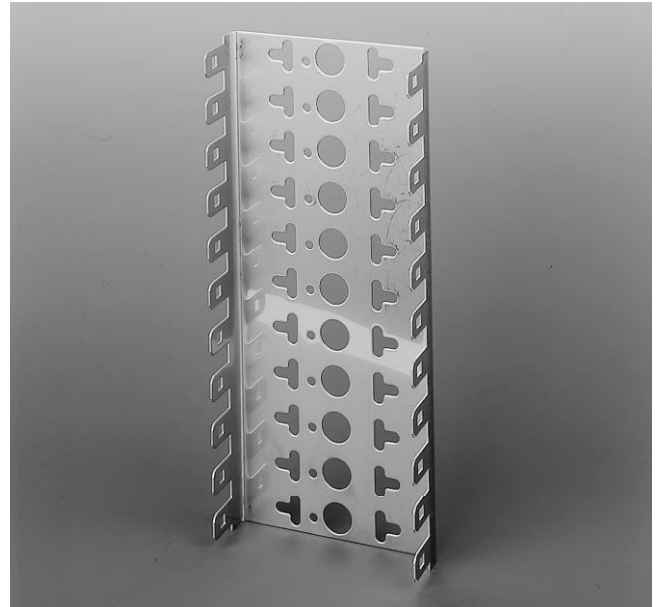
When selecting the pitch, we recommend:

- Pitch: 25 mm with one-sided jumper guides
- Pitch: 22.5 mm with two-sided jumper guides
- Pitch: 27.5 mm with one-sided jumper guides with particularly thick insulation

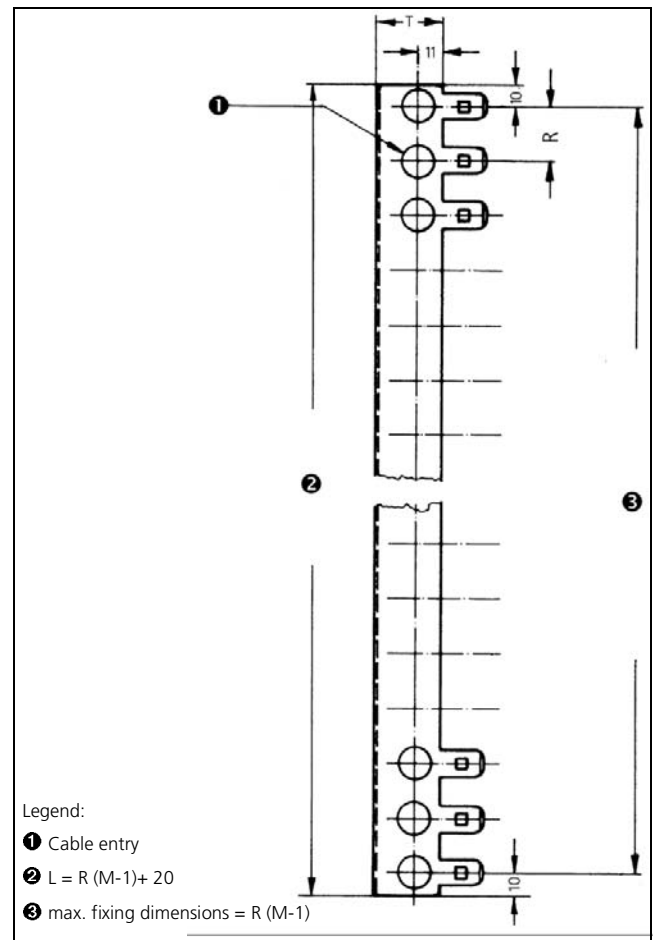
When selecting the hole pattern, we recommend:

- Hole pattern 1
with central cable entry, for special use with mounting adapters for wall mounting or for KRONNECTION boxes I, II, III and KRONNECTION box A 100
- Hole pattern 2
with right-sided cable entry, for universal use with asymmetrical fixing of back-mount frames (for example, KSL, KWL cabinets or KWGL racks).

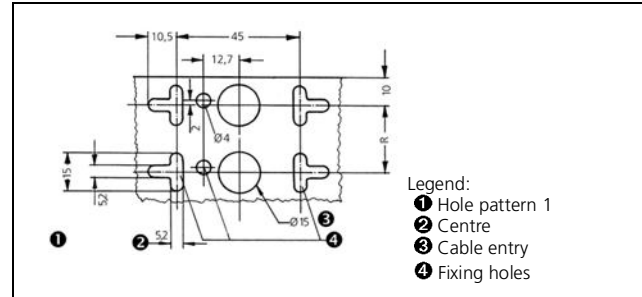
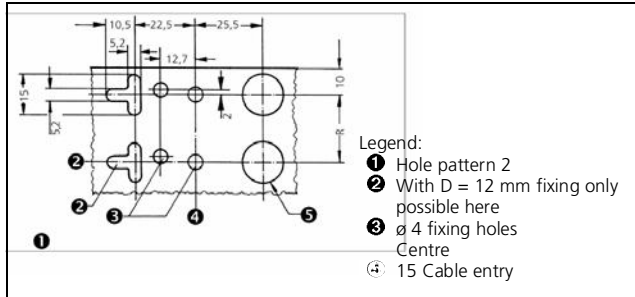
Necessary installation space / back-mount frame length = pitch x (number of modules - 1) + 20 mm



Back-mount frame 2/10, Hole pattern 1, pitch=22.5; depth=22, 11 modules



Accessories: Back-mount Frames and PROFIL Mounting

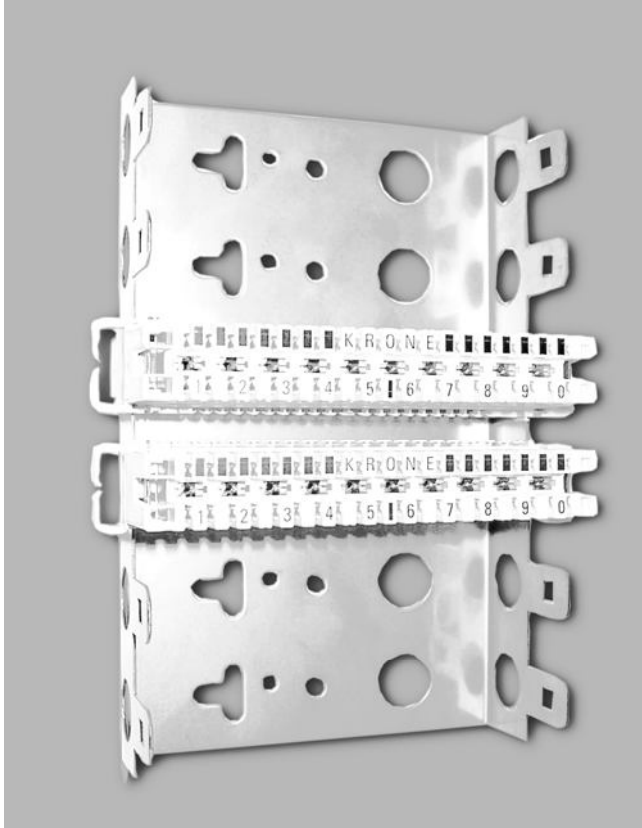

Order data:

Order-No:	Description	Weight/Pack	Pack
Depth of cable space = 12 mm			
6050 3 112-01	Back-mount frame 2/10 hole pattern 1, pitch = 22.5 mm, 1 module		1 piece
6050 3 112-02	Back-mount frame 2/10 hole pattern 1, pitch = 22.5 mm, 2 modules		1 piece
6050 3 112-03	Back-mount frame 2/10 hole pattern 1, pitch = 22.5 mm, 3 modules		1 piece
6050 3 112-05	Back-mount frame 2/10 hole pattern 1, pitch = 22.5 mm, 5 modules		1 piece
6050 3 112-10	Back-mount frame 2/10 hole pattern 1, pitch = 22.5 mm, 10 modules		1 piece
Depth of cable space = 22 mm			
6050 3 122-03	Back-mount frame 2/10 hole pattern 1, pitch = 22.5 mm, 3 modules		1 piece
6050 3 122-05	Back-mount frame 2/10 hole pattern 1, pitch = 22.5 mm, 5 modules		1 piece
6050 3 122-06	Back-mount frame 2/10, 6 modules hole pattern 1, pitch = 22.5 mm, 6 modules		1 piece
6050 3 122-10	Back-mount frame 2/10, 10 modules hole pattern 1, pitch = 22.5 mm, 10 modules		1 piece
6050 3 122-11	Back-mount frame 2/10 hole pattern 1, pitch = 22.5 mm, 11 modules		1 piece
6441 3 222-17	Back-mount frame 2/8 hole pattern 2, pitch = 25 mm, 17 modules		1 piece
Depth of cable space = 30 mm			
6050 3 130-05	Back-mount frame 2/10 hole pattern 1, pitch = 22.5 mm, 5 modules		1 piece
6050 3 130-06	Back-mount frame 2/10 hole pattern 1, pitch = 22.5 mm, 6 modules		1 piece
6441 3 230-09	Back-mount frame 2/8 hole pattern 2, pitch = 25 mm, 9 modules		1 piece
6050 3 130-10	Back-mount frame 2/10 hole pattern 1, pitch = 22.5 mm, 10 modules		1 piece
6050 3 130-11	Back-mount frame 2/10 hole pattern 1, pitch = 22.5 mm, 11 modules		1 piece
6050 3 130-20	Back-mount frame 2/10 hole pattern 1, pitch = 22.5 mm, 20 modules		1 piece

Accessories: Back-mount Frames and PROFIL Mounting

Order data:	Order-No:	Description	Weight/Pack	Pack
	Depth of cable space = 50 mm			
	6050 3 150-10	Back-mount frame 2/10 hole pattern 1, pitch = 22.5 mm, 10 modules		1 piece
	6442 3 250-10	Back-mount frame 2/10 hole pattern 2, pitch = 25 mm , 10 modules		1 piece
	6050 3 150-11	Back-mount frame 2/10 hole pattern 1, pitch = 22.5 mm, 11 modules		1 piece
	6442 3 250-11	Back-mount frame 2/10 hole pattern 2, pitch = 25 mm , 11 modules		1 piece
	6441 3 250-17	Back-mount frame 2/8 hole pattern 2, pitch = 25 mm , 17 modules		1 piece
	6050 3 150-20	Back-mount frame 2/10 hole pattern 1, pitch = 22.5 mm, 20 modules		1 piece
	6442 3 250-20	Back-mount frame 2/10 hole pattern 2, pitch = 25 mm , 20 modules		1 piece
	6050 3 150-21	Back-mount frame 2/10 hole pattern 1, pitch = 22.5 mm, 21 modules		1 piece
	6050 3 150-25	Back-mount frame 2/10 hole pattern 1, pitch = 22.5 mm, 25 modules		1 piece
	6050 3 150-30	Back-mount frame 2/10 hole pattern 1, pitch = 22.5 mm, 30 modules		1 piece
	6442 3 250-30	Back-mount frame 2/10 hole pattern 2, pitch = 25 mm , 30 modules		1 piece
	6050 3 150-31	Back-mount frame 2/10 hole pattern 1, pitch = 22.5 mm, 31 modules		1 piece
	6050 3 150-33	Back-mount frame 2/10 hole pattern 1, pitch = 22.5 mm, 33 modules		1 piece
	6050 3 150-50	Back-mount frame 2/10 hole pattern 1, pitch = 22.5 mm, 50 modules		1 piece
	6442 3 250-51	Back-mount frame 2/10 hole pattern 2, pitch = 25 mm , 51 modules		1 piece
Special accessories:	Order-No:	Description		
	6044 2 106-00	Set of screws M5 x 16 incl. nuts M5, washers 5.3 mm, toothed washers 5.3 mm		

Accessories: Back-mount Frames and PROFIL Mounting



Back-mount frame pitch 27.5 mm for 6 modules (modules order separately)

Back-mount Frame 2/10, Pitch 27.5 mm

LSA-PLUS back-mount frames consist of U-shaped stainless-steel sheet. This means a high degree of stability and full corrosion resistance. Depending on requirement, back-mount frames can be used to accommodate various numbers of modules as mentioned in the tables below.

When selecting the frame depth, we recommend:

- up to 100 pairs -> 22 mm depth
- 100 pairs and more-> 50 mm depth

This recommendation is based on a wire thickness, including insulation, of 0.5 mm/1.5 mm. Deeper frames must be selected for wires measuring 0.6mm - 0.9 mm, or the cable has to be fed through the back-mount frame bundle by bundle.

When selecting the pitch, we recommend:

- Pitch: 25.0 mm with one-sided jumper guides
- Pitch: 22.5 mm with two-sided jumper guides
- Pitch: 27.5 mm with one-sided jumper guides with particularly thick insulation.

Order data:

Order-No:	Description	Weight/Pack	Pack
Depth = 22 mm			
6569 3 054-11	Back-mount frame 2/10 - 4 modules		1 piece
6569 3 054-12	Back-mount frame 2/10 - 6 modules		1 piece
6569 3 054-13	Back-mount frame 2/10 - 11 modules		1 piece
6569 3 054-15	Back-mount frame 2/10 - 13 modules		1 piece
Depth = 50 mm			
6569 3 054-16	Back-mount frame 2/10 - 1x10+1 modules		1 piece
6569 3 054-17	Back-mount frame 2/10 - 2x10+1 modules		1 piece
6569 3 054-18	Back-mount frame 2/10 - 3x10+1 modules		1 piece

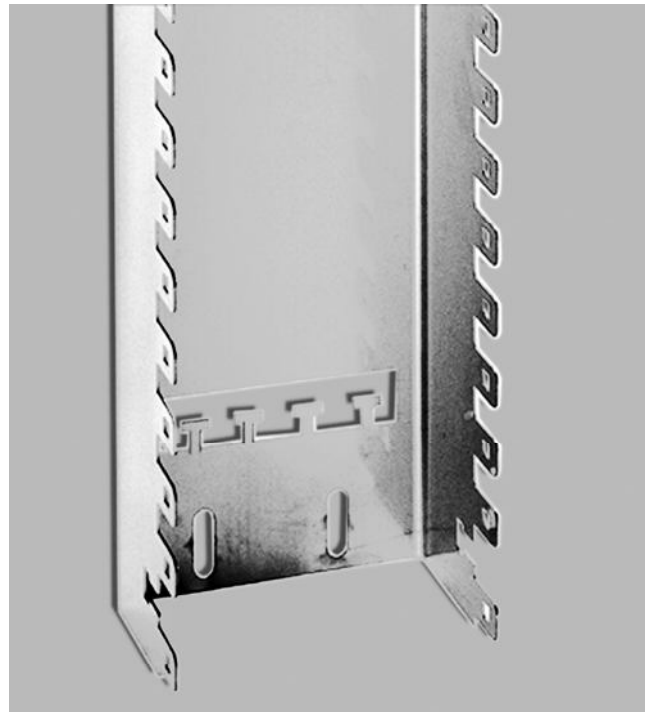
Accessories: Back-mount Frames and PROFIL Mounting

Back-mount Frame 2/10 for 1...4 x 10 + 1 Modules

For installation of LSA-PLUS modules 2/10 with separate accommodation for:

- 1 further LSA-PLUS module
- 1 module label holder 2/10
- 1 earth-wire module 2/38

The 100-pair blocks are separated from each other (pitch between the blocks: 30 mm).



Order data:

Order-No:	Description	Length	Weight/pack	Pack
5267 3 585-	10 pairs, Back-mount frame 2/10 with pitch 22.5 mm (overall width: 104.5 mm) hole pattern 2			
	00 Depth of cable area: 50 mm, 1 x 10 + 1 modules 2/10	263 mm	0.460 kg	1 piece
	01 Depth of cable area: 50 mm, 2 x 10 + 1 modules 2/10	496 mm	0.820 kg	1 piece
	02 Depth of cable area: 50 mm, 3 x 10 + 1 modules 2/10	728 mm	1.220 kg	1 piece
	03 Depth of cable area: 50 mm, 4 x 10 + 1 modules 2/10	961 mm	1.620 kg	1 piece