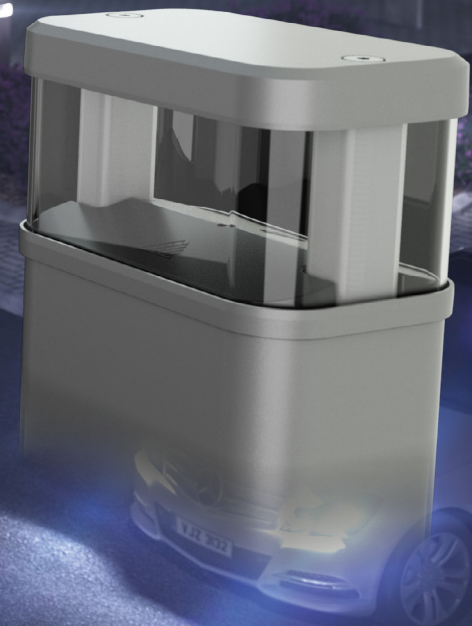
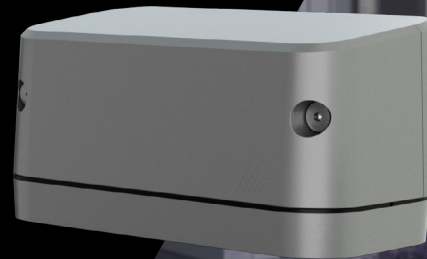


DENVER



HOLOPHANE®



**A COHESIVE FAMILY
PERFECT FOR CREATING A
DESIGN-INSPIRED LANDSCAPE.**



GIVING YOUR OUTDOOR
SPACE ITS OWN **IDENTITY.**





PATENTED TRANSITION ZONE
REDUCES PERCEIVED GLARE
FOR IMPROVED VISUAL COMFORT

Available on all Denver iD luminaires





HIGH TRANSPARENCY GLASS
WITH **HYDROPHILIC PROPERTIES**
FOR ULTIMATE PERFORMANCE



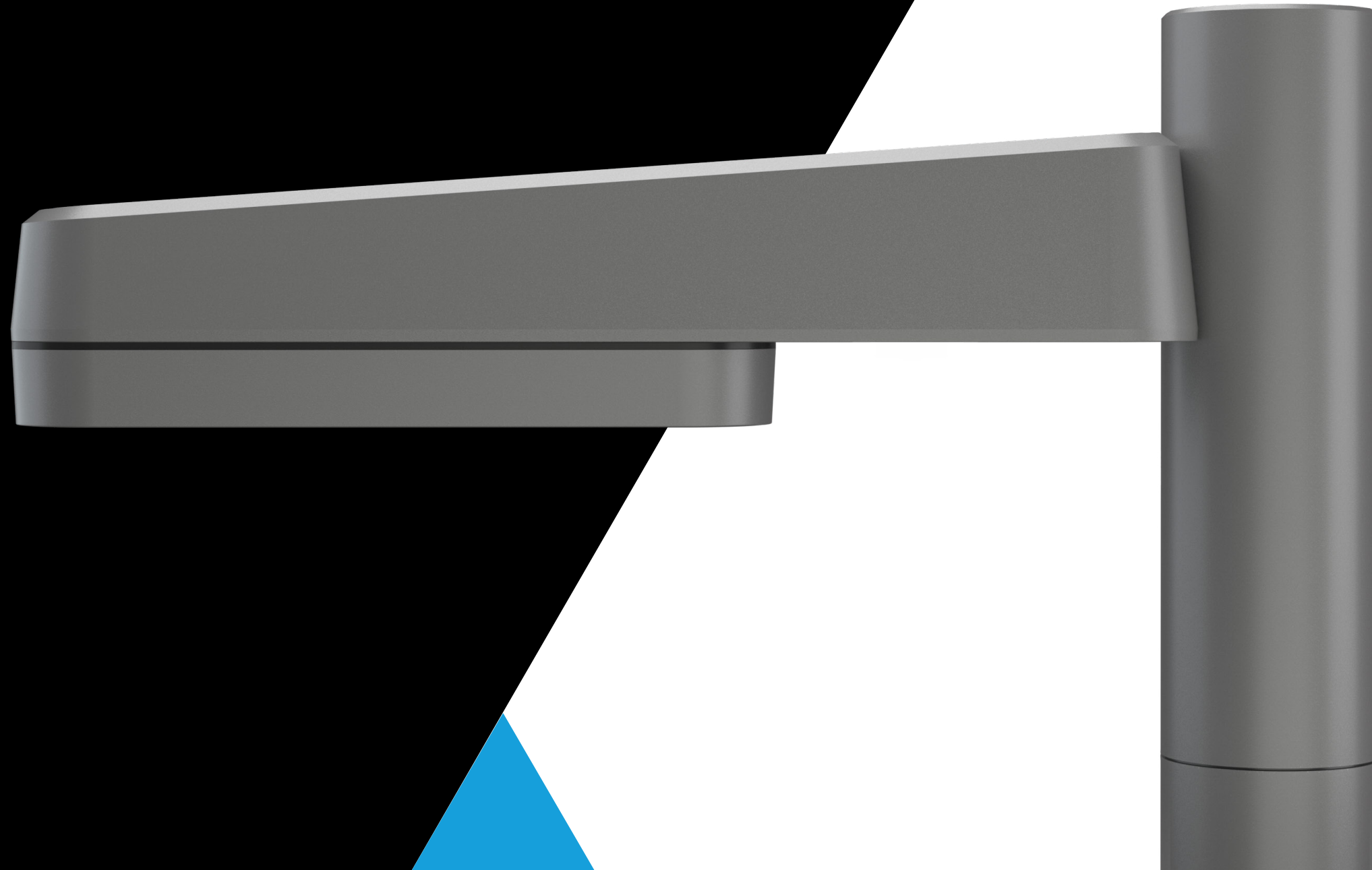
INTEGRATED SMART CONNECTIVITY
ACROSS THE ENTIRE RANGE



**EASILY REMOVABLE LIGHT ENGINES
FOR SIMPLE MAINTENANCE**



**SLEEK YET UNOBTRUSIVE DESIGN
TO WORK IN ANY SETTING.**





WWW.HOLOPHANE.CO.UK/DENVER-ID/

DISCOVER THE RANGE

DENVER
iD POLE



DENVER
iD WALL



DENVER
iD BOLLARD



DENVER iD



Holophane Europe Limited
Bond Avenue, Bletchley, Milton Keynes MK1 1JG United Kingdom
Telephone: +44 (0)1908 649292 UK Fax: +44 (0)1908 367618
International Fax: +44 (0)1908 363789
E-mail: info@holophane.co.uk

www.holophane.co.uk

AcuityBrands.
Expanding the boundaries of lighting™

